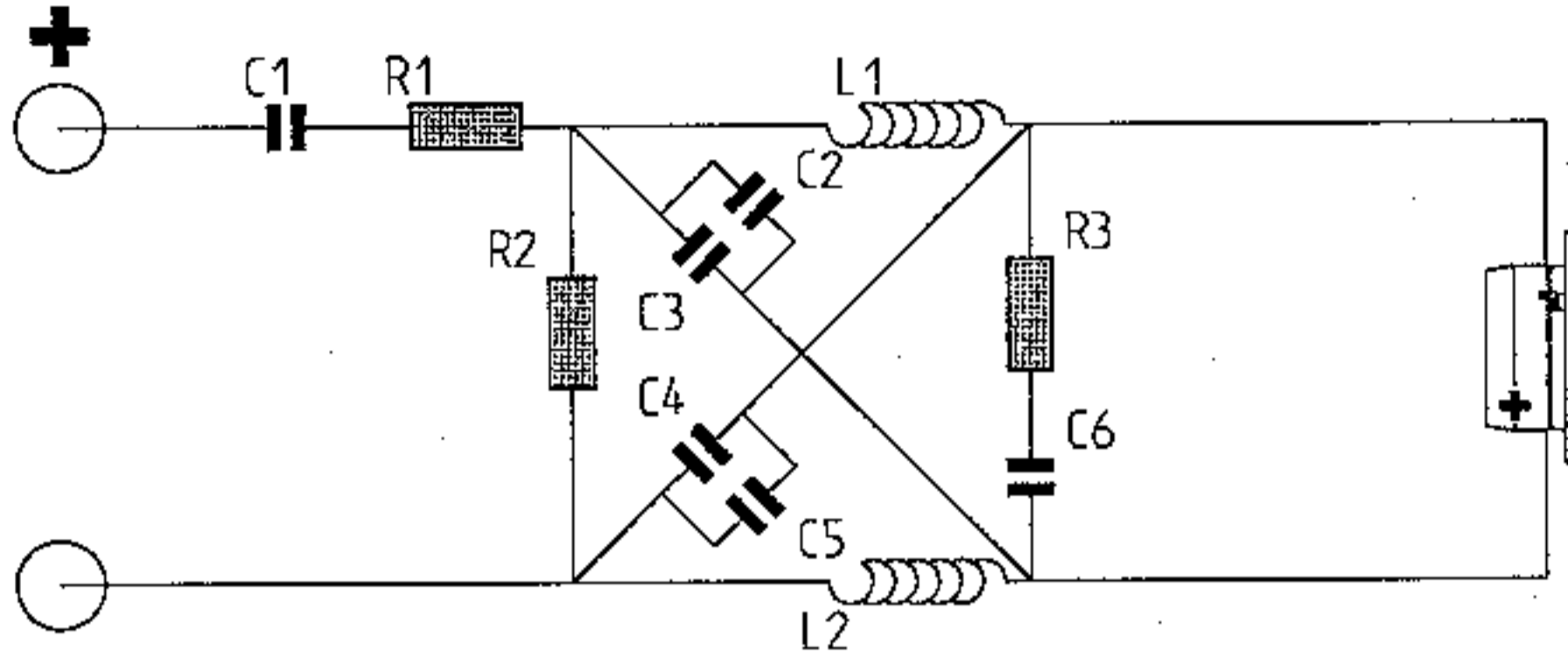


# DYNAUDIO

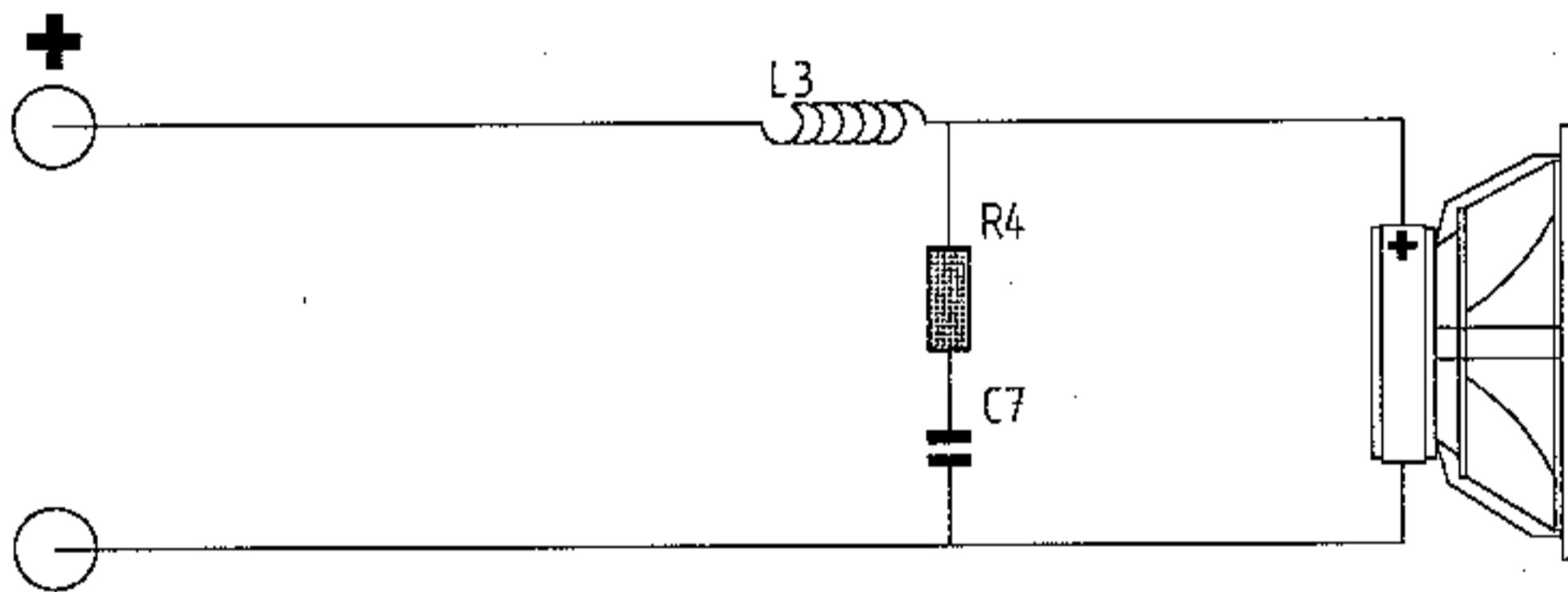
# NUANCE

## FILTER

Dynaudio D28/2, Esotec D260 of Esotar T330D



Dynaudio 17W-75XL06



### FILTERONDERDELEN

- C1 6.8 uf MKP
- C2 3.3 uf MKP
- C3 15.0 uf MKT
- C4 15.0 uf MKT
- C5 3.3 uf MKP
- C6 1.5 uf MKT (D28 & T330D), 1.0 uf MKT (D260)
- C7 10.0 uf BIP of MKT
- R1 10.0 ohm 5 W
- R2 15.0 ohm 5 W
- R3 10.0 ohm 5 W (D28 & T330D), 6.8 ohm 5 W (D260)
- R4 10.0 ohm 5 W
- L1 0.56 mH luchtspoel dr. dikte 0.71 mm
- L2 0.56 mH luchtspoel dr. dikte 0.71 mm
- L3 1.80 mH luchtspoel dr. dikte 1.40 mm