

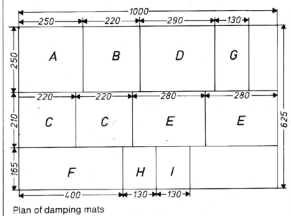
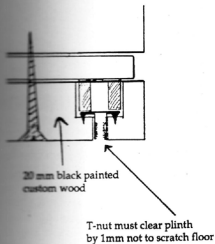
The crossover

The correct design of the crossover is as important as careful dimensioning of the components.

Of course both versions of XENNON 3 have to have individual design.

Both are parallel 1st order filters with a phase adjustment circuit in the midrange section. It is important that the two 0.8 mH air cores have a high internal resistance and the wire gauge may not exceed 2.4 mm.

Details of spike mountings

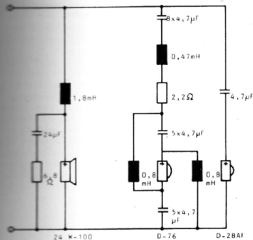


Parts for 1 pair of XENNON 3

Type	Number	3/100	3/75
woofer	2	24 W-100	24 W-75
midrange	2	D-76	D-52 AF
tweeter	2	D-28 AF	D-21 AF
crossover	2	DF XENNON 3/100	DF XENNON 3/75
damping material	2	rockwool RP III	
screws woofer	12	csk. hexagon socket head cap screws M 4 x 35 mm	
nuts woofer	12	rivet nuts M 4	
screws midrange + tweeter	12	counter sunk head tapping screws 3.5 x 16 mm	
cabinet	2	original DYNAUDIO XENNON 3 or D-I-Y	
terminal	2	heavy standard	

All measurements are in millimeters if not indicated otherwise.

Crossover 3/100



If you prefer the high end range more "soft" or if your living room is very much reflecting and less damped you may lower the high end energy as per step I. If this is still not sufficient to your requirements please act with step II.

Crossover 3/75

- step I: Please add a resistor 1.2 Ohm in series with D-21 AF.
step II: Instead of 1.1 Ohm please use 2.2 Ohm.

Crossover 3/100

- step I: Please add a resistor 1.2 Ohm in series with D-28 AF.
step II: Please add additionally to step I a 15 Ohm in parallel with the D-28 AF.