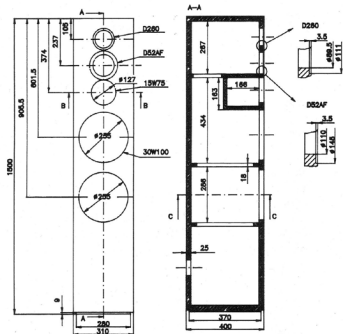
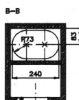


Material:  
25mm MDF  
18mm MDF  
30mm MDF



## The Tweeter

► In the tweeter range, Dynaudio's new development, the ESOTEC D-260 is used. This tweeter is the result of several years of development based on the experience gained with the legendary ESOTAR T-330 D. The overall frequency range is extremely flat, and even beyond 20 kHz there are no peaks or dips.

To achieve a natural music reproduction, it is of particular importance that the energy generated by the back wave of the dome is absorbed completely, so that it is not reflected and remixed to the front wave after a delay. This is a problem that has long plagued other tweeter designs, and its elimination in the design of the ESOTEC D-260 ensures faithful musical reproduction.

