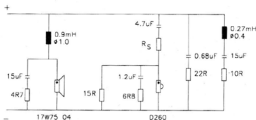


The Crossover.

► Only 6dB crossover slopes result in a correct impulse response. This physical law is observed by Dynaudio also with the Sirius construction. Selection of the components is done with the wellknown diligence. Some of the components are rather expensive but their quality without alternative worldwide. Only this policy allows to unfold the entire quality of the Dynaudio drivers.



The Kit.

- 2 Tweeter ESOTEC D-260
- 2 Woofer 17 W-75
- 2 Variovent LQ (white damping inlay)
- 2 Variovent (yellow damping inlay)
- 2 Terminal
- 2 Sirius crossover
- 2 Bitumen damping pads 125x195 mm
- 4 Damping foam 440x195 mm
- 2 Damping foam 440x85 mm
- 2 Damping foam 195x145 mm
- 1 Damping wadding piece Q 320 g
- 1 Sealing glue LX-2
- 36 Self tapping screws 3.5x20 mm
- 1 3.2 m cable, Ø 2.5 mm²
- 2 DYNAUDIO badges
- 1 Blue-print

The Product.

► Demanding only little space the Sirius staggers with its music reproduction. Anyhow, this speaker construction is aimed at people who prefer quality before quantity. Therefore the other components used such as amplifier etc. should be of adequate standard.